



NEWSLETTER SEPTEMBER 2019

Burbank Art Association
P.O. Box 1013, Burbank CA 91507

www.burbankartassociation.org

Encouraging creativity in visual arts and serving the community since 1950.



President's Message

Dear Fellow Artists,

Welcome back to another fun-packed year with BAA. I trust we've all had an eventful summer - one that I hope included relaxation, reflection, and creativity. Stefanie Girard and Pam McDonald are going to regale us with outstanding programs this year. Helena Bowman and Parisa Talebian will be organizing our Fall and Spring Shows. We will have other opportunities to exhibit thanks to Wendy Wallace and Joanna Lewis.

Last month we witnessed the passing of Swain's Art Supply store in Glendale. After 70 years of serving the art community in Glendale (and a major move to Colorado Blvd.), they decided to close up shop. I was tempted to go to their farewell sale, but then I thought my money would be better spent supporting Carter Sexton, one of the few independent art supply stores still standing and one of our long standing sponsors. I suggest that you patronize these stores whenever possible: Carter Sexton, Blue Rooster, and Continental Graphics (oops, that one bit the dust last year).

This being the month of Labor Day, I chose artist Ben Shahn for a second look. A social realist, his paintings dealt with themes of urban life, poverty, worker rights, social justice, and Judaism. His family emigrated to the U.S. from Lithuania after his father had been exiled to Siberia for political activities. This undoubtedly encouraged his compassion for the underdog. Shahn was originally trained as a lithographer and graphic artist, which influenced his very recognizable style. While he's best known for "The Passion of Sacco and Vanzetti," a series of 25 gouache paintings, I decided to feature his 1943 painting "The Welders," a personal favorite of mine.

I will be missing in action at this month's meeting, but you will be in Joanna Lewis' very capable hands.

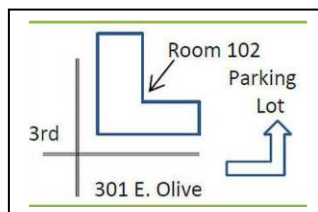
All the best,

Your commander in chief, *Carol*



Our next regular monthly meeting is on Wednesday, September 18, 2019.

Monthly meetings are held from 7-9pm at the City Administrative Services Building, 301 E. Olive Ave., Room 102. Parking is in back or on the side of the building on Olive. Enter in the back of the building on the lower level.



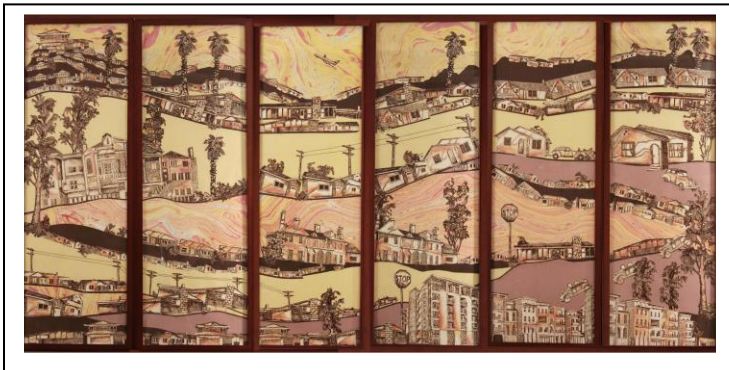
September Program ~ Stefanie Girard & Pam McDonald, Co-Chairs

We are pleased to welcome Kathi Flood, as our next presenter.

Kathi Flood's wall works, installations, and assemblages offer colorful narratives about contemporary urban life. A self-declared "guerrilla sociologist," her tongue-in-cheek observations are expressed through her visual art, writings, and activism.

Kathi has been included in over 350 exhibitions in the U.S. and Europe, has served as an arts advocate, and has curated and produced visual and aural events. She has also been active in the spoken word community and has a solo CD of her bombastic stories (New Alliance Records, Rocky Road Peep Show and Paperhangers' Directory Point-of-Purchase Dreams) and she has authored a creative writing textbook (Royal Fireworks Press, Hotwords, A Student's Guide to Writing Truth). She was an art educator at secondary and university levels for 30 years, specializing in drawing and murals.

Flood uses etchings, drawings, fibers, text, and gutter walk findings on antique supports to tell humorous, sentimental, goofy stories that catalogue our responses to urban life. She categorizes and comments on local issues, such as traffic patterns, over-development, qualities that define a city, and the architecture of Los Angeles. She uses sociology and psychology to consider contemporary issues such as telemarketers, surveillance, the complexity of modern life, relationships and communication, consumerism and excessive materialism, fashion, the evolution of media, politics, adjusting to the Electronic Age, the quality of our medical care, psychotherapy, the development of language, school cultures, and art marketing in Los Angeles.



ELECTION NEWS

Due to the lack of a quorum at the June general meeting when the election of officers was to take place, a vote was not taken. However, a subsequent email vote by the membership was quite successful and the slate of officers and chairmanships were elected by a majority vote. Thank you to all members who responded and voted. We look forward to another great year.

As we begin the year, however, we find the Membership Chair position will need to be refilled. If you are interested in helping out and learning about this position, please see Wendy at the September meeting.

Nominating Committee

Ellie Klein, Delta Mishler, Jamie Butterworth

EXHIBITS - Helena Bowman & Parisa Talebian, Exhibit Chairs

BAA Annual Fall Show is coming up **Nov 1 - Nov 14** at the Betsy Lueke Creative Art Center.

Take-in will be on Monday, October 28, 9 am – 12 noon. Opening night and Reception with awards will be on Friday, Nov 1, 7-9 pm. Art Pick-up will be on Friday, Nov 15, 9am - noon

The Betsy Lueke Creative Art Center (BLCAC) is located at 1100 W. Clark Avenue in Burbank. We have many new members now, so we recommend that you visit the gallery ahead of time to get a feel of the space. It will inspire and amaze you!

This show is for current BAA members who have paid their membership dues by the October 16, 2019 (BAA general meeting). We will not accept membership payments at Take-in.

Art Drop Off: Monday, October 28, 9 am to 12 noon at the BLCAC. Please be prompt. No entries will be accepted after 12 pm. One entry per artist. Entry fee is \$20.00.

Artists' Reception: Friday, November 1 at the BLCAC, from 7-9 pm. We will have a Sign-up sheet for refreshments at the October meeting.

Art Take-Down and Pick-Up: Friday, Nov 15, from 9 am-12 pm.

All submissions must meet the Creative Art Center Rules & Regulations:

- **Frames** – all work should be properly framed or with the canvas edges nicely painted.
- **Mats** - neutral colors.
- **Cover** watercolors, drawings and other easily damaged work with glass, or with Plexiglas if overall size is 18 x 24" or larger.
- **Ceramic/Glasswork** – All pieces must be fired, and auxiliary pieces securely attached. Work must not contain sharp points or edges and must be securely attached to pedestals with quake mount.
- **Most important:** All work must be properly wired for hanging – as always!

A detailed checklist will be available for everyone at the October meeting on Wed. Oct. 16. An "Intent-to Enter" sheet will be available for the members at the September and October meetings.

If you have any questions at all about the Fall Show, please contact us:

Helena Bowman at helenasbowman@gmail.com Parisa Talebian at parisa.talebian@gmail.com

GEO GALLERY SCHEDULE

SEPTEMBER 2 - 27:

"APRIL'S SUPER FUN ART SHOW"

FEATURING APRIL COWGUR'S SUPER FUN ART!

RECEPTION: SATURDAY, SEPT. 14, 5-7 PM

COME ENJOY, FOOD, DRINKS, LIVE MUSIC,
GOOD TIMES, AND FUN ART!

The Geo Gallery is located at 1545 Victory Blvd. in Glendale, between Western and Sonora.



UP NEXT AT THE GEO ~

October 1-26: "Dark Arts" - A Spooky Show with Keryl Kris Reinke and friends, Jennifer Bentson and Cathy McCroskey. Reception: October. 12, 6-8 pm

November 4- December 6: Members' FREE SHOW. The theme is "Pop Art" – so, let's get creative!

Take In: Saturday, November 2, 9-11am; Reception: Saturday, November 16, 5-7 pm;

Take Down: Friday, December 6

Outside Exhibits ~ Wendy Wallace & Joanna Lewis

Macy's Elevator Gallery Show

We had a wonderful photography show up at Macy's over the summer. I hope everyone got a chance to check it out! Many thanks to all of the participating artists for sharing your beautiful work.

The next Macy's show will be in celebration of their October Grand Re-Opening (yes, construction done!). There is no theme for this one, so submit your favorite pieces. To submit, email images of up to 10 works for consideration to Wendy Wallace at outside@burbankartassociation.org by midnight, Friday, September 27.

Please also include a link to your online portfolio if you have one. Submissions **must** include: title, artwork size, final framed size, and pricing. Artwork drop-off will be Tuesday, October 15, 10 - 11am, and the reception will be Sunday afternoon, October 20, exact time to be announced.

Annual Burbank Classic Car Show, August 3rd

Joanna Lewis and Cristina Carioti co-chaired two Mall Terrace events this summer and they both ran smooth as a fresh jar of Skippy. (Go us!)

Burbank Art Association was in attendance (melting...) at the Annual Burbank Classic Car Show on August 3rd. It was a hot one! Good thing we had the top down on the Terrace at the Mall and there were some cool breezes. Along with fellow BAA artists, Lucine Saakyan, Jesse Walker and Oscar Will, we sold a few items and danced the night away. Thanks to those who showed up, the rocking bands, and the lovely people at the Mall who helped coordinate this fun family affair.

Let me know if you want to be a part of these events in the future. Joanna



Carter Sexton

ARTIST'S MATERIALS

5308 Laurel Canyon Blvd, N. Hollywood, CA 91607
Between MAGNOLIA and CHANDLER

818-763-5050

10% discount for BAA Members

Also: Custom Canvas Stretching • Airbrush Service
and Repair • NEW Artwork Photography • Delivery

THE
ANIMATION
ACADEMY

BURBANK CALIFORNIA

Excellence In Art Education
For Animation Since 1998

TheAnimationAcademy.com

818-848-6590

KEEP CREATING!

Character Design
Visual Development
Background Design
Concept Development
More!



Membership Renewal 2019-2020 - Wendy Wallace

It's time once again to renew your BAA membership for the coming year. Dues remain the same this year at \$40 for Individual Membership, \$60 for a Family Membership (two members at the same address), and \$20 for a Student Membership. The Fall Show is right around the corner and you must be a fully paid member (for the full year) to submit an entry to our Fall and Spring judged shows.

Membership dues must be paid by the October 16 general meeting date. We will not be collecting membership dues at the Fall Show take-in.

Good news! You can now renew online at www.burbankartassociation.org!

We are very excited to launch our new website and membership portal where you can renew your membership, keep your information updated, view the latest calendar of association events and more. You should have received an email from the system in July with your login information, but if you need any assistance, please don't hesitate to reach out to our intrepid webmaster, Ren Colantoni, at webmaster@burbankartassociation.org.

If you prefer to pay in person instead of online, please bring your check or cash to the meeting on September 18th, or mail ahead to: BURBANK ART ASSOCIATION P. O. Box 1013, Burbank CA 91507-1013.

BAA continues to be very active with many opportunities for members to exhibit their work. Renew your membership early, so that you can continue to receive the Newsletter, take part in our monthly meetings with guest artist demos, and participate in our judged shows and many exhibit opportunities. As a member in good standing, you also have the opportunity to host your own solo show at the Geo. Monthly demo artists are being lined up, and we encourage you to bring a friend along (for \$5 please), so they can learn more about the Association. (Insider's tip: You can bring a guest for free to the first meeting in September!)

We look forward to seeing you again for another exciting and creative year! If you have any renewal questions, please feel free to contact me at membership@burbankartassociation.org.

See you soon, Wendy



Thousand Oaks Association of Artists

September 6 - 26, 2019

Opening reception: Sept 9, 7-9pm

The Thousand Oaks Art Association (TOAA) is the oldest art membership group in the Conejo Valley. All of their

members are juried into the organization twice a year by a three-member panel of judges.

Coming in October is an exhibition of ceramic from Southern California artists. On view will be a variety of works ranging from the purely functional, to expressive vessels, and unique forms of sculpture, all in a wide tapestry of color and textural surfaces.

In November, the CAC will feature the BAA Members' Annual Fall Show.

The Betsy Lueke Creative Arts Center is located at 1100 W. Clark Ave., Burbank. Gallery hours: 9am-9pm Monday-Thursday, 9am-7pm Friday, 9am-1pm Saturday, closed on Sunday. For information, call 818-238-5397 or visit www.burbankca.gov/departments/parks-and-recreation/arts-events/betsy-lueke-creative-arts-center.





IN MEMORIAM

We are very sorry to report that our friend Guy Newell, a long-time BAA member, passed away in late March. His daughter, Debbie, wrote to us that Guy was very fond of our group and really liked our shows. They apparently had a nice tribute for him at the Stone Fire Grill in Chatsworth. He will be greatly missed.

Travels with Ren ~ Ren Colantoni

My wife and I recently took a trip over to Sedona, Arizona for the purpose of seeing the galleries, being amazed by the scenery, and doing some 4X4 off-road exploring. (I'll let her tell you about that part.) We found many galleries, large and small, representing many hundreds of artists, and the general quality I thought was excellent. Virtually all the galleries show multiple artists and may contain many different media and types of art in one place.

Regarding paintings, by far the greatest number were in oil, followed by acrylic and a few watercolors, and these were excellent. Then came bronze sculpture, both large and small, some glass, lots of jewelry, all the usual gifts and souvenirs, and a few Native American shops with handcrafts, rugs and sculpture. I came away with the following thoughts. First, It's a good thing that I have art only as a hobby, because I wouldn't last five minutes trying to make a living with it, this due to the outstanding quality of the work we saw. Next, I feel that we are all pricing our stuff way too low. Even simple, quick looks like your kids 3rd grade artwork stuff on small panels were going for \$200 to \$300.

I also felt that Burbank isn't really the place for an artist's "colony." There are not enough rich people in Burbank. You need to do whatever is needed to attract rich people who have the disposable income to buy your stuff (after you raise your prices). Sedona is a resort town and is experiencing a housing boom of one- to two-million dollar homes. The art market is increasing, as folks need art to dress up their new digs. I don't see this happening in Burbank any time soon.

However, Sedona is a great place to visit for a few days, as the natural surroundings of red rocks and scenery is amazing. There are ample restaurants and hotels although they are not cheap. Next is going to be Scottsdale. We were told that it is the place where art is centered in Arizona.

Til next time, Ren

Karen Sachs' next *Paint Your Essence Workshop*, "Feeling Safe in My Sanctuary," is on Sunday, Sept 8th. You can sign up here <https://bit.ly/2Z6QIVE> and for more information, contact Karen at Karen@paintyouressence.com.

The Burbank Art Association is a volunteer-run, non-profit organization.

Our mission is to stimulate and encourage creative expression and provide a showcase for our members' talents. Artists of all ages and skill levels are welcome to join. Sponsorships and donations to the BAA help to fund exhibits, awards and student scholarships. Your gift will have a tremendous impact by keeping our organization thriving and serving its community.

If you or someone you know would like to become a sponsor, please contact us through our website at:
www.burbankartassociation.org.